



# Flush & Molded Interior Doors

Door Style Guide



distributed by





## Our History

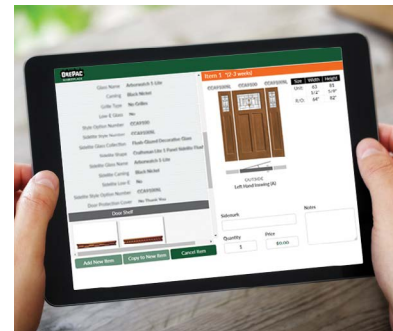
OrePac is a family-owned and operated business, founded by the Hart family in 1977. Through strong leadership and a commitment to success, the company has grown into one of the premier distributors in the building industry.

Trust, integrity, and a dedication to excellence are the values most important to OrePac. That commitment can be found in the services we offer, the quality of the products we provide, and the way we treat our employees and customers. This dedication to our markets has enabled us to make a positive impact on the shelter industry and the communities we serve.

## What to Know About Flush & Molded Doors

### Easy Online Ordering with OrePac Marketplace

At OrePac, our goal is to Make Complicated Simple™. That's why we've created an industry-leading configurator to simplify the door ordering process for our dealers. Talk to your OrePac Sales Representative to find out more about this easy and time-saving tool.



### Turn Your Door Style into a Versatile Pocket Door

The CS Cavity Slider™ is a practical solution for those areas where there is not enough space for a swinging door. In addition to its space saving attributes in restrooms, hallways and laundries, it can be used with confidence for architectural feature openings around your project. Contact your OrePac Sales Representative for more information.



### Complete the Look with Builders Choice Moulding

We are proud to offer a wide selection of moulding and millwork to complete your home project. Whether you're building a new home, remodeling, or simply updating a room, Builders Choice offers millwork for all professional and DIY applications. Browse our moulding and millwork catalogs to find moulding in architectural profiles and wood species that complement any style of home.



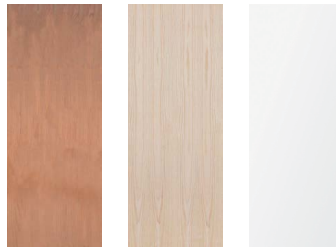


## Building Quality Doors Since 1866

Since 1866 the Steves family has always been involved in the company. Today, six generations later, Steves & Sons continues its commitment to quality, craftsmanship and style. The Steves family founded the company on the principles of conservative growth and environmental responsibility. That hallmark remains today in every item Steves & Sons manufactures. From incorporating recycled materials, to making products that can conceivably last as long as the application, the Steves family is proud to build on the tradition of environmental respect and responsibility. As an American family success story, Steves & Sons will continue to offer quality and service at a fair price for generations to come.



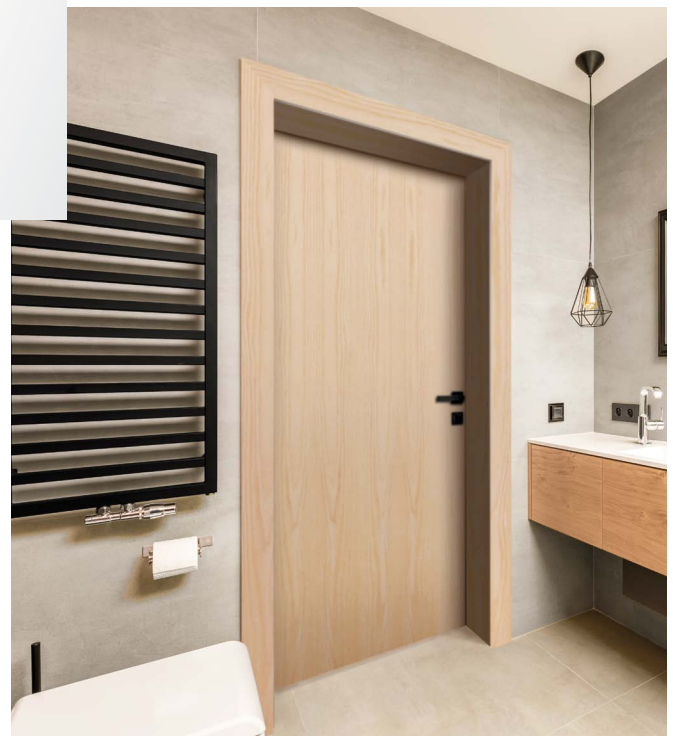
## The Look, Feel & Sound of Wood



Wood is beautiful, but solid wood doors aren't always the best choice for everyone. Fortunately, flush doors from Steves & Sons provide the beauty, feel and sound of wood, making flush doors an excellent option. With a rich look in a wide range of wood grains you'll find the perfect choice for any décor.

## Long-Lasting Beauty

When you install a Steves & Sons molded panel door, you'll know that the perfect fit will stay the perfect fit — because these doors resist shrinking, swelling, cracking or splitting. The smooth or textured surface can be painted to match any décor, delivering eye-catching beauty for years to come.



# Molded Panel Doors



**1 Panel Shaker**

Smooth  
Square Sticking  
6/8 🔥 8/0 🔥

**Bifold**  
6/8



**2 Panel Shaker**

Smooth  
Square Sticking  
6/8 🔥 8/0 🔥

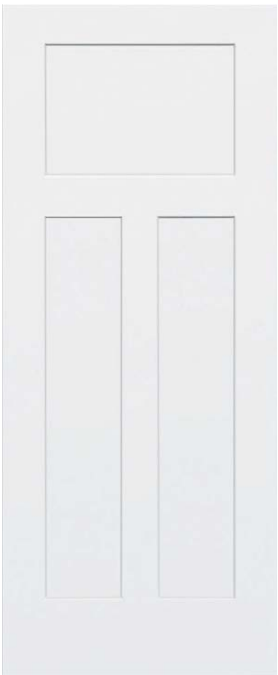
**Bifold**  
6/8



**3 Panel Equal Shaker**

Smooth  
Square Sticking  
6/8 🔥 8/0 🔥

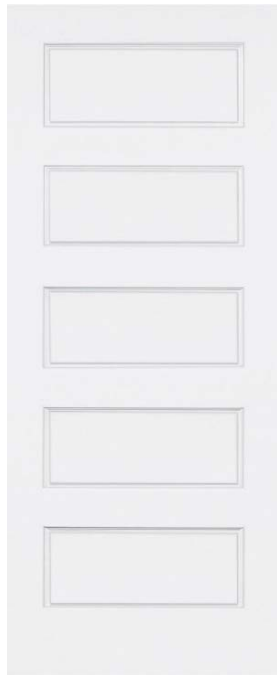
**Bifold**  
6/8



**3 Panel Craftsman Shaker**

Smooth  
Square Sticking  
6/8 🔥

**Bifold**  
6/8



**5 Panel Shaker**

Smooth  
Step Sticking  
6/8 🔥 8/0 🔥

**Bifold**  
6/8



**5 Panel**

Smooth  
Bead & Cove Sticking  
6/8 🔥 8/0 🔥

**Bifold**  
6/8

Ask your Sales Representative for solid core stock availability



**2 Panel Square Top**  
Smooth  
Bead & Cove Sticking  
6/8 🔥 8/0 🔥

**Bifold**  
6/8



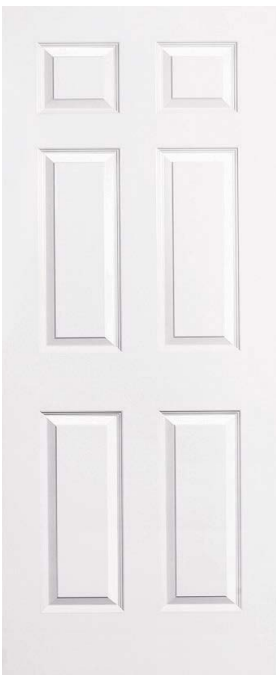
**2 Panel Arch Top**  
Smooth  
Bead & Cove Sticking  
6/8 🔥 8/0 🔥

**Bifold**  
6/8



**2 Panel Arch Top Plank**  
Smooth  
Ovolo Sticking  
6/8 🔥

**Bifold**  
6/8



**6 Panel**  
Smooth & Textured  
Bead & Cove Sticking  
6/8 🔥 8/0\* 🔥  
\*textured only

**Bifold**  
6/8

## Flush Doors



**Bifold**  
6/8  
(available in all species options)



**Lauan (Mahogany)**  
Smooth  
6/8 🔥



**Birch**  
Smooth  
6/8 🔥

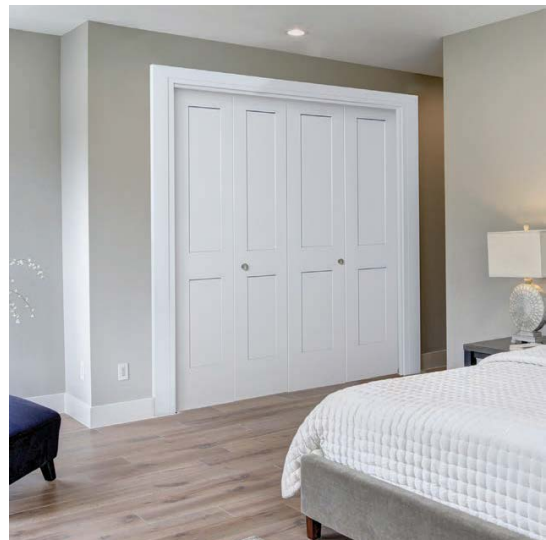


**Primed Hardboard**  
Smooth  
6/8 🔥

20 minute fire-rated option available

Ask your Sales Representative about hollow core and solid core fire-rated options





OrePac Building Products | 877-4-OrePac | [www.orepac.com](http://www.orepac.com)

©2021 OrePac Building Products. All rights reserved. OP-0621\_NW-REGION

©2021 Steves & Sons. All rights reserved. Steves & Sons Inc. reserves the right to make changes to design, availability and specifications as we continue to strive for product excellence.

